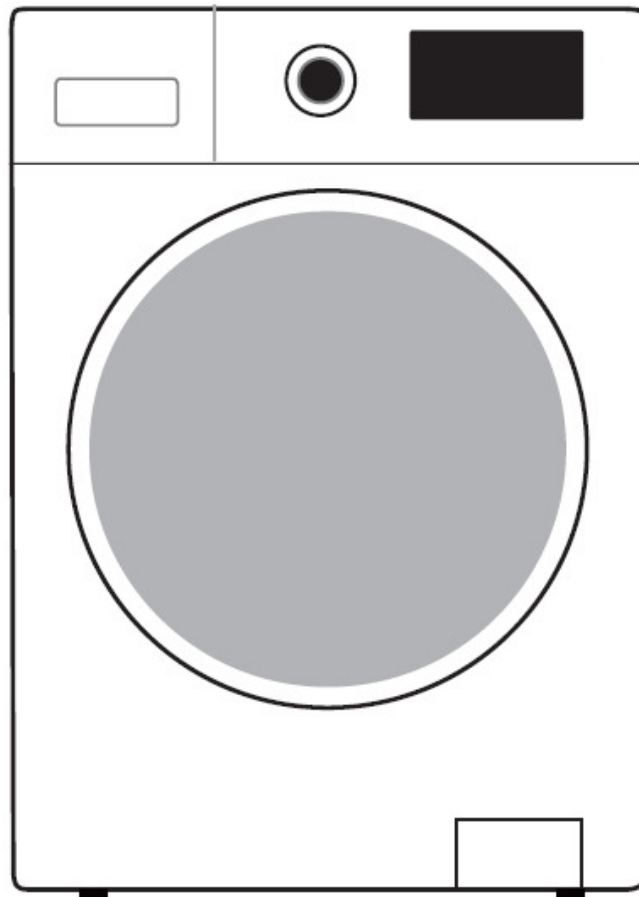


BOMANN®

HOUSEHOLD CONDENSER TUMBLE DRYER WTK 7181



Instruction Manual

CE

Contents

Introduction	Page 3
General Notes	Page 3
Special safety Information for this Unit	Page 4
Transport and Packaging	Page 5
Appliance Equipment	Page 5
Installation	Page 6
Startup / Operation	Page 7
Cleaning and Maintenance	Page 11
Troubleshooting	Page 12
Technical Data	Page 12
Disposal	Page 12
EU Product Data Sheet	Page 13

Introduction

Thank you for choosing our product. We hope you will enjoy using the appliance.

Symbols in these Instructions for Use

Important information for your safety is specially marked. It is essential to comply with these instructions to avoid accidents and prevent damage:

 **WARNING:**

This warns you of dangers to your health and indicates possible injury risks.

 **CAUTION:**

This refers to possible hazards to the machine or other objects.

 **NOTE:** This highlights tips and information.

General Notes



Read the operating instructions very carefully before putting the appliance into operation and keep the instructions including the warranty and the receipt. If you give this device to other people, also pass on the operating instructions.

 **NOTE:**

- Due to constant product modifications, your device may differ slightly from these operating instructions; Functions and methods of use remain unchanged.
- The illustrations in these operating instructions may differ from the original device.
- The appliance is designed exclusively for private use and for the envisaged purpose. This appliance is not fit for commercial use.
- The appliance is only to be used as described in the user manual. Do not use the appliance for any other purpose. Any other use is not intended and can result in damages or personal injuries.

- Do not use it outdoors. Keep it away from sources of heat, direct sunlight and humidity.
- Do not operate the appliance **without** supervision.
- When not in use, for cleaning, user maintenance works or with disruption, switch off the appliance and disconnect the plug (pull the plug itself, not the lead) or turn off the fuse.
- The appliance and if possible the mains lead have to be checked regularly for signs of damage. If damage is found the appliance must not be used.
- For safety reasons, alterations or modifications of the appliance are prohibited.
- In order to ensure your children's safety, please keep all packaging (plastic bags, boxes, polystyrene etc.) out of their reach.

 **WARNING:**

Do not allow small children to play with the foil. There is a **danger of suffocation!**

Special safety information for this Unit



WARNING: Hot surface! Danger of burns!

The touchable surfaces may become very hot during operation.

WARNING:

- Never switch the appliance off before the end of the drying cycle, unless all washing is taken out quickly and spread out so that the heat can be dissipated.
- The appliance must not be connected via an external switching device, such as a timer or be connected to a circuit that is regularly turned on and off by a device.
- The dry weight of laundry must not exceed the max. capacity of 8 kg.
- The ventilation openings in the appliance base (if existing) may not be clogged / blocked e.g. by carpet.
- Do not place the appliance behind a lockable door, a sliding door, or a door with a hinge that lies opposite the door hinge of the appliance in such a way that it prevents the appliance door from opening fully.
- Observe the "Drying advice" that we give you in the chapter "Startup / Operation".
- The appliance must not be used if industrial chemicals have been used for cleaning.
- Do not use the appliance without installed filter. Clean the lint filter before or after each use.
- Always keep the installation room of the dryer free of dust and lint.
- This appliance can be used by **children** aged from 8 years and above and persons with reduced physical, sensory or mental capabilities or

lack of experience and knowledge if they have been given supervision or instruction concerning **use of the appliance** in a safe way and understand the hazards involved.

- **Children** under 3 years should be kept away, unless they are constantly supervised.
- **Children** shall not play with the appliance.
- Cleaning and **user maintenance** shall not be made by **children**, unless they are older than 8 years and are supervised.
- Do not try to repair the appliance on your own. Always contact an authorized technician. If the supply cord is damaged, it must be replaced by the manufacturer, its service agent or similarly qualified persons in order to avoid a hazard.

Transport and Packaging

Transport the appliance

If possible, transport the appliance in a vertical position. Secure the appliance sufficiently and protect it against weather during transport.

Unpacking the appliance

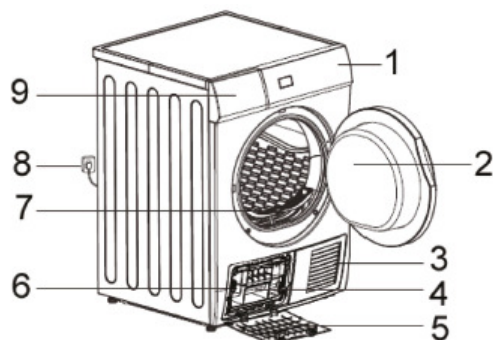
- Remove the appliance from its packaging.
- Remove all packaging material, such as foils, filler and cardboard packaging.
- To prevent hazards, check the appliance for any transport damage.
- In case of damage, do not put the appliance into operation. Contact your distributor.

i NOTE:

Production residue or dust may have collected on the appliance. We recommend cleaning the appliance according to chapter “Cleaning and Maintenance”.

Appliance Equipment

Appliance Overview



- | | |
|--------------------------|---------------------|
| 1 Control panel | 6 Condenser |
| 2 Unit door / Bull's eye | 7 Lint filter |
| 3 Ventilation openings | 8 Mains plug |
| 4 Filter unit | 9 Condensation tank |
| 5 Service cover | |

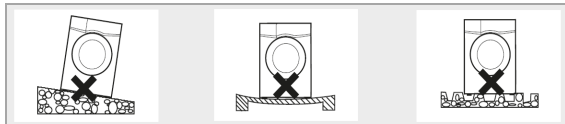
Installation

⚠ WARNING:

The unit must not be connected to the mains during installing. Otherwise there is **danger to life** or **electric shock hazard!**

Installation location

- The site should be located near a properly grounded power socket. The socket must be freely accessible.
- Good ventilation around the appliance is required, in order to dissipate the heat properly. Enough clearance must be created for this purpose.
- The free space in front of the unit should be so that the appliance door can be opened without hindrance.
- Make sure that the floor on which the appliance is installed, is even, heat-resistant and clean.
- Take care of a solid and horizontal position of the appliance. If the appliance is not horizontally leveled, adjust the feet accordingly (see “Adjust the feet”).



- **Avoid the installation:**
 - near heaters, next to a stove, direct sunlight or any other heat sources;
 - at locations with high humidity (e.g. outdoors), as metal parts would be susceptible to corrosion under such circumstances;
 - in rooms where the temperature could drop below freezing. Do not expose the appliance any weather.
 - near volatile or flammable materials (e.g. gas, fuel, alcohol, paint, etc.).

Adjusting the feet

⚠ CAUTION:

The feet must never be removed. Do not restrict the floor clearance through carpets, strips of wood or similar. **Danger of heat accumulation!**

- Turn the feet to the right to let down the appliance; turn to the left to lift it up. The feet must have solid ground contact.
- Check with a spirit level whether the appliance is leveled horizontally. If the unit is not in balance, the feet must be adjusted again.

Electrical connection

⚠ WARNING:

- The installation to the mains supply must conform to the local standards and regulations.
- Improper connection may cause to an **electric shock!**
- Do not use multiple sockets or extension cords.
- It is not allowed to modify the plug provided with the appliance! If the plug does not fit properly to the outlet, let install a proper outlet by an authorized specialist.
- The accessibility of the power plug must always be ensured in order to disconnect the device from the power supply in case of an emergency.
- Make sure that the voltage supply matches the specifications on the rating label (appliance back) before connecting.
- Connect the mains cable to a properly installed and earthed wall outlet.
- If the plug after installation is not accessible, a corresponding disconnect device must be available to meet the relevant safety regulations.

Startup / Operation

Prior using for the first time

- Remove any accessories and other materials from the appliance drum.
- Clean the appliance drum. Follow the instructions which we provide in the chapter “Cleaning and Maintenance”.
- Allow the appliance to dry the first time for about 30 minutes with old, damp clothes (see “Starting the program”).

Drying advice

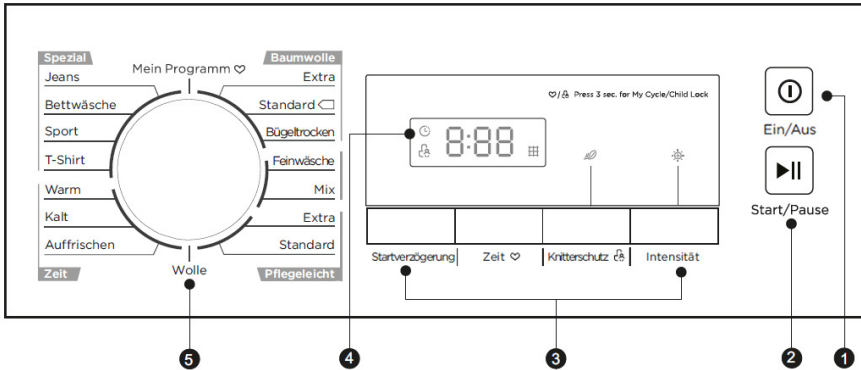
CAUTION: Do NOT dry in the appliance!

- Fabrics which are not tumble-dryer safe. Always follow the instructions on the care labels of your fabrics.
- Washing that has not been washed.
- Washing stained with cooking oil, acetone, alcohol, fuel, petrol, kerosene, stain remover, turpentine, wax, or wax remover. This must be washed first in the washing machine with hot water and detergent before drying.
- Objects such as foam rubber (latex), shower caps, waterproof fabrics, rubberized items, and items of clothing or pillows with foam rubber flakes.
- Softeners or similar products should be used as specified in the softener instructions.
- Remove all objects from pockets, such as matches and lighters.
- Close zips, buttons, or hooks before drying. Tie loose straps or loops together.

Adding laundry

- Loosen the washed textiles and sort them according to the desired drying pattern, fiber and fabric type, same size and residual moisture after spinning. This makes drying especially smooth.
- Do not overload the appliance. Each load should correspond to the rated capacity of the appliance.
- Close the appliance door. Make sure that no laundry items are trapped between the appliance door and the gasket.

Control panel



1 EIN/AUS (Power)

Button to switch the power supply on and off.

2 START/PAUSE

Button to start/pause the selected or running program. If the appliance is in pause mode, the current display stops flashing.

3 Function buttons

Button to select the functions. The flashing control lamps / display icons indicate the selection. **Note that the functions are partially program-dependent!**

■ INTENSITÄT (Intensity)

Button to activate/deactivate the dry intensity level.

Extends the drying time at the end of the drying program by approx. 10 minutes.

■ KNITTERSCHUTZ (Anti-Crease)

Activate/deactivate the anti-crease function by simply pressing the button.

Extends the automatic anti-crease phase (30 minutes) at the end of the drying program to approx. 120 minutes; prevents wrinkles.

Safety child lock

Activate/deactivate the safety child lock by keep pressing the Anti-crease button for approx. 3 seconds after the program starts.

■ ZEIT (Time)

In the time programs, you can specify the drying time. Press repeatedly to select a drying time, in 10 minutes increments:

- Warm: 0:10 to 2:00 h
- Cold: 0:10 to 0:30 h
- Refresh: 0:20 to 2:30 h

My program

After the program has been selected, keep pressing the Time button for approx. 3 seconds. Your favorite program is saved under "My program" (program selector switch). The program remains stored until you change it using the same procedure.




■ STARTVERZÖGERUNG (Delay)

By repeatedly pressing the button, the program start can be delayed by 1 to 24 hours. Select and start a program, the appliance starts automatically after the selected time delay has expired.

4 LED Display:

Display for settings and information:

- The start delay and the drying time are selected via the display.
- The remaining running time of the start delay is displayed, the program is started after [xx] hours.
- After the program starts, the remaining running time is displayed as [x:xx] hours and minutes.
- Symbol display:

	Start delay		Clean lint filter
	Safety child lock	FUL	Empty condensation tank

5 Program selector switch

To select a program, turn the program selector switch to the appropriate position. For details about the programs, see the "Program table".



- Error codes are displayed in the event of a fault.

Program table

i NOTE:

The listed values are approximate and recommendations under normal conditions and therefore not binding. The consumption data and the running times may differ from the stated values depending on the load, residual moisture and temperature.

Program	Drying level	Program selection information	Loading kg	Time h/min	Energy kWh		
Baumwolle (Cotton)	Extra	Normal wet cotton textiles, e.g. towels, sheets, covers, underwear etc.	8.0	2:30	5.0	*	*
	Standard*			2:10	4.8	*	*
	Bügeltrocken (Iron dry)			1:40	4.2	---	*
Feinwäsche (Delicate)	----	For laundry such as lingerie (silk), which must be treated gently.	1.0	1:00	2.0	---	*
Mix	----	Blended fabric made of cotton and synthetic fibers.	3.0	1:30	3.2	*	*
Pflegeleicht (Synthetics)	Extra	Less durable textiles; e.g. synthetics.	3.5	1:30	1.7	*	*
	Standard			1:10	1.6	*	*
Wolle (Wool)	----	For machine and dryer suitable wool products.	1.0	0:25	0.4	---	—
Zeit-Programme (Time programs)	Warm	For small amounts of laundry and after-drying of multi-layered textiles.	Drying regardless of loading and moisture at predefined duration.			---	*
	Kalt (Cool)					---	---
	Auffrischen (Refresh)	Refreshing, ventilating, deflating or crumpling dry laundry.				---	---
Spezial (Special)	Jeans	Casual wear like jeans or sweat-shirts with different material thickness.	6.0	2:50	5.2	*	*
	Bettwäsche (Bed linen)	Bed linen, such as single / double sheets, pillows, duvet covers, bedspreads.	5.0	2:00	4.5	*	*
Spezial (Special)	Sport	Sportswear, thin and light fabrics, microfiber, polyester.	3.0	1:30	2.4	*	*
	T-Shirt	Non-iron shirts or blouses made of cotton, linen, synthetic fibers or blended fabrics.	3.0	1:20	2.2	*	*

Program	Drying level	Program selection information	Loading kg	Time h/min	Energy kWh		
Mein Programm (My program)	Depending on the predefined operating conditions!						

***Standard program:**  **Cotton Standard**

When fully loaded and partially loaded, this drying program is used to determine the information on the energy label. This program is suitable for drying normal wet cotton textiles and most efficient in terms of cotton energy consumption.

Automatic drying programs

The appliance detects the moisture of the load and adjusts the optimal drying time automatically. The electronic control guarantees the best drying results even with low loading of the dryer.

It is enabled for all programs, except for the programs "Warm", "Cool", "Refresh", and "Wool".

Capacity

Do not overload the appliance, otherwise the textiles will be damaged and drying will be impaired. Observe the information in the "Program table".

Starting the program

- Connect the appliance to the power supply and switch it on.
- Put your laundry in the drum.
- Close the appliance door properly.
- Set the required operating conditions.
- Start the drying program.

Changing the program

A change is not possible after the program has been started. To select a new program, you must switch the appliance off and on again.

End of program

At the end of the drying process, several signal tones sound and the display shows [0:00].

The control panel goes into standby mode and the unit performs an automatic anti-crease phase.

Automatic anti-crease phase

If the laundry is not removed at the end of the drying program, the appliance performs an automatic anti-crease phase of about 30 minutes (the anti-crease control lamp flashes).

The appliance continues its drum movement in intervals, thus protecting the textiles against wrinkles.

Thereafter, the operation is finally stopped. During the anti-crease phase laundry can be removed.

Switching off

- Switch off the appliance.
- Clean the lint filter and empty the condensation tank as described under "Cleaning and Maintenance".
- Keep the appliance door slightly open until the next drying process to avoid odors.
- If the appliance is not in use for a long time period, disconnect the device from the power supply.

Energy saving tips

- Use the maximum capacity of the respective drying program.
- Select the drying program according to the type of laundry and the required degree of dryness.
- Do not overly dry the laundry. This protects your laundry, prevents wrinkles and saves energy.
- Periodically clean the filter to prevent over-drying and high energy consumption.

- Ventilate the room well. The room temperature should not rise above 35°C.

Cleaning and Maintenance

⚠ WARNING:

- Always switch off the appliance and disconnect it from the power supply before cleaning and user maintenance.
- Allow the appliance to cool down enough before cleaning. **Scalding!**
- Do not use steam cleaners for cleaning the appliance; moisture could enter electrical components. **Risk of electric shock!** Hot steam could damage the plastic parts. The appliance must be dry before restarting operation.

⚠ CAUTION:

- Do not use a wire brush or other sharp, abrasive items.
- Do not use any acidic or abrasive detergents.

Maintenance of the dryer

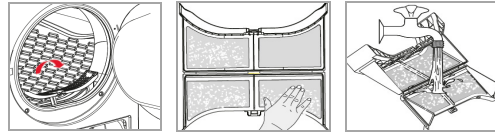
- Clean the appliance outer surfaces and the door sealing thoroughly with a soft, damp cloth. Use only mild cleaning agent.
- Check the drum regularly for dirt or fiber residues; also clean the drum and the inside of the door with a soft, damp cloth.
- Dry the appliance thoroughly before taking in operation again.

Cleaning the lint filter

⚠ CAUTION:

- A dirty filter will affect the dry result. Check and clean the filter regularly.
- The appliance must never be operated without installed filter. Improper insertion of the filter may affect performance and damage the unit.

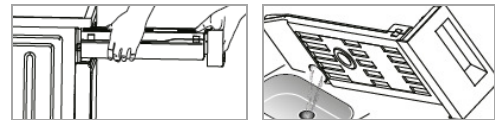
The lint filter in the door opening catches all lint that accumulates during drying. Clean the filter before or after each drying process.



- Remove the filter upwards.
- Strip the fluff by hand, using a damp cloth or cleaning the filter under running water.
- Thoroughly dry the filter and reinstall it properly.

Emptying the condensation tank

Empty the condensation water tank in the control panel after each drying process!



If the tank is overfilled during a running program, the drying process stops and the corresponding symbol appears on the display.

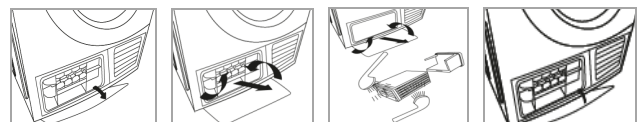
After emptying the condensation tank, press the START/PAUSE button to continue the drying process.

Cleaning the condenser

⚠ CAUTION:

The appliance must never be operated without inserted condenser.

Clean the condenser regularly:





- Loosen the service cover. **Attention!!** Place an absorbent cloth underneath, residual water may leak out.
- Completely open the service cover.
- Open the two opposite locking levers.
- Pull out the condenser, clean it and the seals under running water.

- Insert the condenser properly.
- Close both locking levers. Close the service cover and lock it.

Troubleshooting

Before you contact an authorized specialist

For some malfunctions, the display shows error codes to warn you:

Trouble / Code	Possible cause / measure
<i>Appliance does not work or start</i>	Check the power supply. Is the door closed, the device switched on or a program selected? Consider the max. loading capacity.
<i>Unusual sound and strong vibration</i>	The device must stand on a firm surface. Are the feet aligned?
<i>Housing is hot or it smells like burned</i>	Fluff filter and/or condenser must be cleaned.
<i>Display symbol</i> 	Lint filter is blocked and needs to be cleaned.
<i>Display symbol</i> 	Condensation tank is full and must be emptied.
<i>Display code</i> E30	Heating error ⇒ Call specialist
<i>Display code</i> E32	Moisture sensor error ⇒ Call specialist
<i>Display code</i> E33 / E34	Temperature sensor error ⇒ Call specialist

i NOTE:

If a problem persists after following the steps above, contact your distributor or an authorized technician.

Technical Data

Electrical connection.....

Connection voltage:220-240 V~ / 50 Hz

Connection power:2700 W

Rated power: 16 A

Dimension H x W x D / Weight.....

Unit size:84.5 x 59.5 x 61.5 cm

Net weight:approx. 41.0 kg

The right to make technical and design modifications during continuous product development remains reserved.

This appliance has been tested according to all relevant current CE guidelines, such as electromagnetic compatibility and low voltage directives, and has been constructed in accordance with the latest safety regulations.



Disposal

Meaning of the "Dustbin" Symbol

Protect our environment; do not dispose of electrical equipment in the domestic waste.

Please return any electrical equipment that you will no longer use to the collection points provided for their disposal.

This helps avoid the potential effects of incorrect disposal on the environment and human health.

This will contribute to the recycling and other forms of reutilization of electrical and electronic equipment.

Information concerning where these can be disposed of can be obtained from your local authority.

⚠ WARNING:

Remove or disable any existing snap and bolt locks, if you take the unit out of operation or dispose it.

EU Product Data Sheet

Product information for household tumble dryer according to regulation (EU) No. 392/2012

Brand		BOMANN
Model		WTK 7181
Rated capacity	kg	8
Dryer type		Condenser
Energy efficiency class ¹⁾		B
Annual energy consumption ²⁾	kWh/a	560.2
Automatic tumble dryer		•
Energy consumption standard program		
- with full load	kWh	4.73
- with partial load	kWh	2.55
Power consumption: off mode	W	0.4
Power consumption: left-on mode	W	0.6
Duration of the left-on mode	Min.	10
Standard programm ³⁾		Cotton Standard
Program time of standard cotton program		
- weighted at full and partial load	Min.	111
- average at full load	Min.	140
- average at partial load	Min.	90
Condensation efficiency class ⁴⁾		B
Condensation efficiency class standard program		
- average at full load	%	81
- average as partial load	%	81
- weighted at full and partial load	%	81
Noise level	dB(A)	69
Built-in appliance		-

1) A+++ (highest efficiency) to D (lowest efficiency).

2) Weighted annual energy consumption based on 160 drying cycles for the standard program with a full load and partial load, as well as the consumption of operating modes with lower power consumption. The energy consumption per cycle depends on the type of use of the appliance.

3) The "Cotton standard" program with a full load and a partial load is the standard drying program on which the information on the label and in the datasheet is based. This program is suitable for drying normal wet cotton fabrics and is the most efficient regarding the energy consumption for cotton.

4) A (highest efficiency) to G (lowest efficiency).

BOMANN®
C. Bomann GmbH
www.bomann-germany.de
Made in P.R.C.

Stand 04/2020