

BOMANN®

HOUSEHOLD WASHING MACHINE WA 5727 TL



Instruction Manual

CE

Contents

Introduction	Page 3
General Notes	Page 3
Special safety Information for this Unit	Page 4
Transport and Unpacking the Appliance	Page 5
Appliance Equipment	Page 5
Installation	Page 6
Startup / Operation	Page 8
Cleaning and Maintenance	Page 12
Troubleshooting	Page 13
Technical Data	Page 14
Disposal	Page 14
EU Product Data Sheet	Page 15

Introduction

Thank you for choosing our product. We hope you will enjoy using the appliance.

Symbols in these Instructions for Use

Important information for your safety is specially marked. It is essential to comply with these instructions to avoid accidents and prevent damage:

WARNING:

This warns you of dangers to your health and indicates possible injury risks.

CAUTION:

This refers to possible hazards to the machine or other objects.

 **NOTE:** This highlights tips and information.

and disconnect the plug (pull the plug itself, not the lead) or turn off the fuse.

- The appliance and if possible the mains lead have to be checked regularly for signs of damage. If damage is found the appliance must not be used.
- For safety reasons, alterations or modifications of the appliance are prohibited.
- In order to ensure your children's safety, please keep all packaging (plastic bags, boxes, polystyrene etc.) out of their reach.

WARNING:

Do not allow small children to play with the foil. There is a **danger of suffocation!**

General Notes

Read the operating instructions carefully before putting the appliance into operation and keep the instructions including the warranty and the receipt. If you give this device to other people, also pass on the operating instructions.

NOTE:

Illustrations can deviate from the original appliance.

- The appliance is designed exclusively for private use and for the envisaged purpose. This appliance is not fit for commercial use.
- The appliance is only to be used as described in the user manual. Do not use the appliance for any other purpose. Any other use is not intended and can result in damages or personal injuries.
- Do not use it outdoors. Keep it away from sources of heat, direct sunlight and humidity.
- Do not operate the appliance **without** supervision.
- When not in use, for cleaning, user maintenance works or with disruption, switch off the appliance

Special safety Information for this Unit



WARNING: Hot surface! Danger of burns!

During operation the temperature of the unit drum may be very hot.

- Before using the transportation locking screws must be removed, otherwise it may cause serious damages.
- The dry weight of laundry must not exceed the max. loading of 7 kg capacity.
- The unit must be connected with a new set of hoses to the water supply; old hose sets should not be reused.
- The maximum / lowest permitted water inlet pressure is 1.0 / 0.05 MPa.
- Do not use any flammable/explosive cleaning agents such as benzene in the appliance.
- In the appliance bottom are located ventilation openings (depending on model). These may not be blocked e.g. by carpet. Pay attention to free circulation of air.
- If the unit is used in the bathroom, unplug the power cord after using as the proximity of water presents a danger. This even applies when the unit is switched off.
- This appliance can be used by **children** aged from 8 years and above and persons with reduced physical, sensory or mental capabilities or lack of experience and knowledge if they have been given supervision or instruction concerning **use of the appliance** in a safe way and understand the hazards involved.
- **Children** shall not play with the appliance.
- **Children** younger than 3 years should be kept away, unless they are constantly supervised.

- Cleaning and **user maintenance** shall not be made by **children** unless they are older 8 years and supervised.
- The appliance must be cleaned regularly. Follow the instructions in the chapter "Cleaning and Maintenance".
- Do not try to repair the appliance on your own. Always contact an authorized technician. To avoid the exposure to danger, always have faulty cable be replaced only by the manufacturer, by our customer service or by qualified person and with a cable of the same type. Do not use the device if the device or plug is damaged.

Transport and Unpacking the Appliance

Transport the appliance

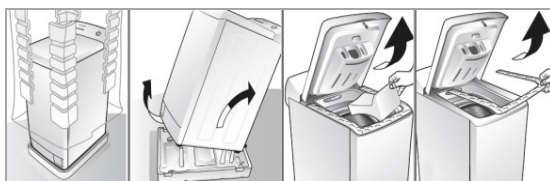
The appliance has wheels which facilitate the transport and installation of the appliance.



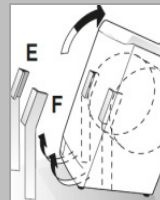
To do this, move the transport lever below the unit base to the left. Return the lever to its original position after determining the final location for the device.

Unpacking the appliance

- Remove the appliance from its packaging.
- Remove all packaging material, such as foils, filler and cardboard packaging.
- To prevent hazards, check the appliance for any transport damage.
- In case of damage, do not put the appliance into operation. Contact your distributor.



CAUTION: Transport protection!



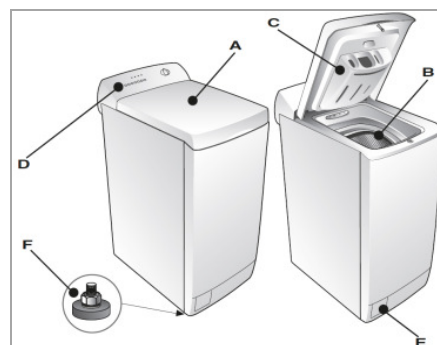
Remove the transport protection strips **E** and **F** (fixing the drum). For this tilt the appliance carefully forwards.

NOTE:

Production residue or dust may have collected on the appliance. We recommend cleaning the appliance according to chapter "Cleaning and Maintenance".

Appliance Equipment

Appliance Overview



- | | |
|------------------------------|------------------------|
| A Appliance lid | D Control panel |
| B Drum | E Filter cover |
| C Detergent container | F Feet |

Delivery scope

1x Inlet hose, 1x bottom plate incl. 3x fixing clips,
2x transport locking covers, 1x hose retaining sheet

Installation

⚠ WARNING:

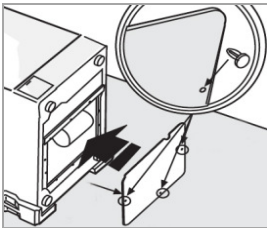
The unit must not be connected to the mains during installing. Otherwise there is **danger to life** or **electric shock hazard!**

⚠ CAUTION:

For a correct operation the appliance must be connected properly. The specifications for water supply and drain as well as the electrical connection must fulfill the required criteria.

Install the bottom plate

The bottom plate is included in the scope of delivery between the appliance rear and the packaging.

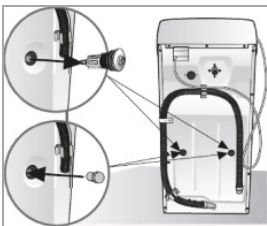


Align the plate in its intended position underneath the device and fix it with the enclosed clips.

Remove the transport locking screws

⚠ CAUTION:

- Before using, all transport locking screws must be removed from the appliance back. Otherwise it may cause serious damages.
- Keep the transport locking screws for later use / transport. Never transport the appliance without properly attached transportation safety!



Remove the transport locking screws with a wrench. Insert the supplied transport locking covers.

Installation location

- The site should be located near the water inlet and outlet, as well as near a properly grounded power socket.
- Good ventilation around the appliance is required, in order to dissipate the heat properly. Sufficient clearance must be created for this purpose.
- The clearance to the top must be created so, that the unit lid can open without being impeded.
- Make sure that the floor on which the appliance is installed, is even, heat-resistant and clean.
- Take care of a solid and horizontal position of the appliance. If the appliance is not horizontally leveled, adjust the feet accordingly (see “Adjust the feet”).
- Power cord and water hoses may not kinked or squashed.
- The wall socket must be freely accessible.
- **Avoid the installation:**
 - near heaters, next to a stove, direct sunlight or any other heat sources;
 - at locations with high humidity (e.g. outdoors), as metal parts would be susceptible to corrosion under such circumstances;
 - in rooms where the temperature could drop below freezing. Do not expose the appliance any weather.
 - near volatile or flammable materials (e.g. gas, fuel, alcohol, paint, etc.).

Adjusting the feet

⚠ CAUTION:

The feet must never be removed. Do not restrict the floor clearance through carpets, strips of wood or similar. **Danger of heat accumulation!**



Use the wrench to loosen the lock nuts. Rotate the feet to change the height.

Tighten the lock nuts with the wrench, if the unit is aligned. The feet must have solid ground contact. Check with a spirit level whether the appliance is leveled horizontally. If the unit is not in balance, the feet must be adjusted again.

Water connection

⚠ CAUTION:

- The Installation of the water supply must conform to the local laws and regulations.
- The appliance is **not** suitable for hot water supply.
- Use the new supplied hose set to connect the appliance to the water supply. Do not reuse old or used connection sets.
- If the water pipe is new or long time not used, ensure before connecting to the water system, that the water is clear and free from contamination.

Notes on inlet hose safety system (delivery scope depending on model)

The safety system consists of a double-walled inlet hose. It guarantees to cut off the water supply when leakage of the inner hose. Switching off the water supply leads over an electronic contact.

If necessary, you can order an inlet hose safety system from your dealer or in our online accessories shop, www.bomann-germany.de. To order, use the reference number found under "Technical Data".

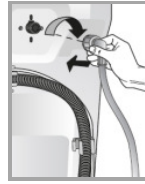
Connect the water inlet hose (cold water connection)

ⓘ NOTE:

The water pressure must be between 0.05-1.0 MPa. With higher pressure: use a pressure regulator.



- Connect the water inlet hose to a water thread with 3/4". Screw the hose firmly in the direction of the screw thread; pay attention for a tight fit.



- Connect the other end of the inlet hose to the inlet valve on the appliance back; pay attention for a tight fit too

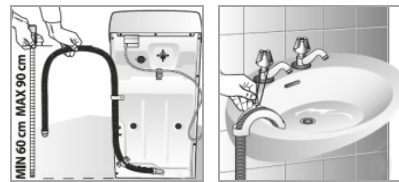
Connect the water drain hose

ⓘ NOTE:

The drain hose has a length of approx. 1.5 m and can extend with a suitable hose and connecting piece to a length of max. 4 m.

⚠ CAUTION:

In order to prevent backflow of contaminated water, the free end of the hose must not come under the water level of the drain.



- Connect the drain hose to a drain pipe with a minimum diameter of 40 mm; alternatively the drain hose can be fixed to a sink or directly to the drainage.
- Always make sure that the hose is not bent or squeezed. For this purpose use the supplied hose retaining sheet.
- The hose must be installed at a height of min. 60 cm and max. 90 cm above the floor.
- Secure the hose securely in order to avoid a change in position and with it a water leakage.

Electrical connection

⚠ WARNING:

- The installation to the mains supply must conform to the local standards and regulations.
- Improper connection may cause to an **electric shock!**
- Do not use multiple sockets or extension cords.
- It is not allowed to modify the plug provided with the appliance! If the plug does not fit properly to

the outlet, let install a proper outlet by an authorized specialist.

- The accessibility of the power plug must always be ensured in order to disconnect the device from the power supply in case of an emergency.
- Make sure that the voltage supply matches the specifications on the rating label (appliance back) before connecting.
- Connect the mains cable to a properly installed and earthed wall outlet.
- If the plug after installation is not accessible, a corresponding disconnect device must be available to meet the relevant safety regulations.

Startup / Operation

Prior using for the first time

- Make sure that all transport securing devices has been removed.
- Remove the accessories and any material from the drum.
- Allow the appliance to wash the first time without any laundry, with the addition of some washing agent in the program [Cotton 90°C] (see "Starting the program").

Preparation of clothes

CAUTION

- Do not wash any items that are declared as non-washable. Follow always the instructions on the care label of your laundry.
- Do not wash clothes soaked in petrol, thinners, alcohol or solvents.
- Foreign objects (e.g. nails, coins) can cause damage to garments and components.

- Check the pockets of all garments on content and empty them completely.
- Sort your fabrics by color and the symbols contained on the care label. Separate white and col-

ored laundry. All new colored clothes should be washed separately.

- Turn buttons and embroidery inside.
- Close zippers, buttons and hooks before washing. Tie any loose straps and loops.
- Wash bras e.g. in a pillowcase to prevent leakage of the steel bracket.
- Particularly delicate fabrics such as curtains, crochet or small items (socks, handkerchiefs, neckties, etc.) should be washed in a closed bag.
- Remove always all the hooks from curtains.
- Washing large and heavy parts such as bath towels, jeans, lined jackets and the like can cause the drum to run unbalanced. We recommend adding one or two smaller parts; this especially helps with the spinning cycle.
- The clothes which easily get fuzzed shall be washed separately; otherwise the other articles can be stained with dust and thrum etc. Preferably, black clothes and cotton clothes shall be washed separately because they can easily get stained with the thrums of other colors when being washed together.
- Clean away dusts, stains and pet hairs from the clothes.
- For spot removing heavy soiling the laundry can be treated with a special prewash spray. Follow the operating instructions of the product packaging.

Select proper detergent

CAUTION:

Always consider the dosage and storage recommendations on the sales packaging.

WARNING:

Keep detergent and additives out of reach for children!

- Use only "slightly foaming" detergent for washing machines according to type of fabric (cotton, syn-

thetics, lined or woolen products), color, washing temperature and degree of soiling. Otherwise foaming can cause overflowing.

- Bleach is alkaline and can damage your clothing, preferably does not use bleach.
- Detergents often leave residue in the clothes, which can cause bad odor if not rinsed properly.
- Detergent cannot easily get dissolved completely if there is too much detergent or water temperature is rather low. It can remain in clothes, pipes and washing machines to pollute the clothes.
- Washing shall follow the weight of clothes, dirty degrees, local water hardness as well as the recommendations from the detergent manufacturers. Consult the water company if you are not clear of water hardness.

Detergent container

CAUTION:
The dispenser is designed exclusively for the use of detergents for washing machines!

- NOTE:**
- Always add the detergent powder just before starting the wash cycle, otherwise it could get damp and will not dissolve properly.
 - At the end of the wash cycle the container must be empty.



- I Chamber for pre-wash detergent.
- II Chamber for main wash detergent.
- Flower icon Chamber for detergent additive (softener).

Do not exceed the MAX marks!

Foam detection

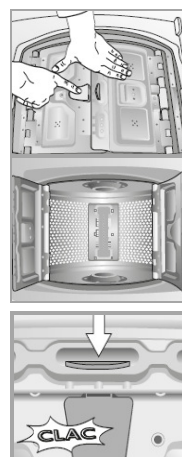
Excessive foam forms when too much detergent is used. This affects the wash and rinse cycle. The function automatically checks foaming; excessive foam is removed by an extra rinse and spin cycle.

Fill in the laundry

- Unravel the clothes before putting them into the machine.
- Each load should correspond to the nominal capacity of the appliance. Do not overload the appliance. Different strengths, sizes and types of laundry can affect the actual loading capacity. It is advisable to load the appliance just that a normal circulation during washing is possible.
- Make sure that no laundries are caught between the drum covers.

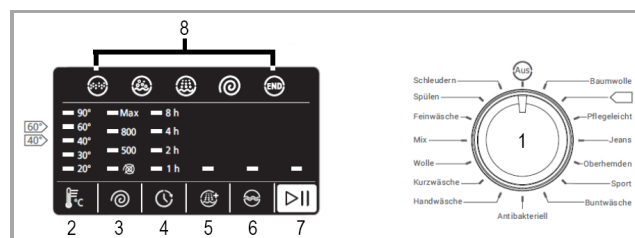
Closing the drum

CAUTION:
Always carefully open and close the drum to avoid possible damage to the laundry and the appliance.



- Open the drum by holding both parts of the drum cover with one hand and pressing the button to open with the other hand.
- After loading the laundry, close the front cover and then the rear cover. You hear a click sound.

Control panel



1 Program selector switch

To select a wash program, turn the program selector switch to the appropriate position. For details about the programs, see the "Program table".

AUS (Off)

To switch the unit off, turn the program selector back to the AUS (Off) position.


2 Wash temperature

By repeatedly pressing the button, you select the required wash temperature.

If the control lamps do not indicate a selection, the wash temperature remains cold.

3 Speed

By repeatedly pressing the button, you select the speed for the spin cycle.

There is no spin in the spin stop setting , the water is pumped out only.

4 Delay

By repeatedly pressing the button, the program start can be changed about 1 – 2 – 4 or 8 hours. Press the Start/Pause button and the unit will start automatically after the selected time has elapsed

5 Extra Rinse

Use the button to select the option “Extra Rinse”.

6 Pre-Wash

Use the button to select the option “Pre-Wash”.

7 Start/Pause

Keep the button pressed for a few seconds to start / stop the selected or running wash program.

8 Program status indicator

Pre-Wash→Wash→Rinse→Spin→End


Depending on the program selector switch position, the start cycle of the respective program lights up.

After the program has started, the control lamps indicate the further program sequence and the end of the program.

Program table



i NOTE:

The shown values are approximate and recommendations under standard conditions and therefore not binding. The consumption data can vary depending on water pressure, water hardness, water inlet temperature, ambient temperature, type and quantity, as well as power supply and selected additional options from the specified values.

Program	Program Information	max. °C	max. kg	max. rpm	max. min
Baumwolle ¹⁾²⁾ (Cotton)	Recommended for durable, heat-resistant cotton textiles.	90	7.0	1200	180
 Cotton Standard*	Suitable for your daily laundry. Washing time is correspondingly long and intense. Recommended for cotton articles such as e.g. bed linen, duvet covers, gowns, underwear etc.	60	7.0	1200	200
		40	7.0	1200	190
Pflegeleicht ¹⁾ (Synthetics)	Suitable for fine textiles, e.g. silk, satin, synthetic or blended fabric.	60	3.5	800	120
Jeans ¹⁾	Suitable for jeans, colored and dark cotton fibers.	40	3.5	800	125
Oberhemden (Shirts)	Suitable for shirts made of cotton and polyester. The washing time is shortened and creasing is reduced.	40	1.5	500	55
Sport ¹⁾²⁾	Especially gentle for slightly soiled sportswear made of cotton, microfibres and synthetics.	40	3.5	800	110
Buntwäsche ¹⁾²⁾ (Coloured)	Suitable for slightly soiled, different colored cotton textiles.	30	7.0	1200	120

Program	Program Information	max. °C	max. kg	max. rpm	max. min
Antibakteriell ¹⁾²⁾ (Antibacterial)	Suitable for e.g. baby clothes or people with allergies. An additional rinse frees the laundry of detergent residues.	40	7.0	1200	240
Handwäsche (Hand wash)	Suitable for delicate textiles characterized as "hand wash" e.g. lingerie, lace underwear.	20	1.5	500	50
Kurzwäsche (Quick)	Suitable for a small amount of textiles with light soiling without noticeable stains.	30	3.5	800	20
Wolle (Wool)	Suitable for "machine washable" wool. Observe the correct washing temperature and use suitable detergent.	40	1.5	800	50
Mix ¹⁾²⁾	Suitable for blended fabric textiles, means cotton mixed with synthetic fibers.	20	3.5	800	100
Feinwäsche (Delicates)	Gentle wash, also suitable for machine washable silk. Use appropriate detergent.	30	1.5	500	55
Spülen ¹⁾ (Rinse)	Separate rinse. For rinsing hand washed fabrics e.g. silk, cashmere, lingerie.	---	7.0	1200	60
Schleudern (Spin)	Separate spin. The water is pumped out before the spin cycle.	---	7.0	1200	25

Note that the additional functions are program-dependent!

 ¹⁾ Extra Rinse	Additional rinse cycle to the previously set main wash program, detergent residues are rinsed out.
 ²⁾ Pre-Wash	Additional wash cycle to the previously set main wash program, for particularly dirty laundry.

***Standard program: Cotton Standard**  / 

With full and partial load, these are the standard wash programs to identify the information on the energy label. These programs are suitable to clean normally soiled laundry and of combined energy and water consumption most efficiently.

Wash temperature

Select the temperature corresponding to the textiles and pollution. Basically: the higher the temperature, the higher the power consumption.

Temperature	Explanation
90°C	Heavily soiled pure white cotton or linen (e.g. tablecloths, sheets and towels).
60°C	Moderately soiled colored cotton, linen and synthetic (e.g. shirts or underwear). Slightly soiled whites (e.g. underwear).
40°C-30°C-cold	Normally soiled laundry (including synthetic and wool).

Capacity

Do not overload the appliance otherwise the laundry is not getting clean. Refer to the information in the "Pprogram table".

Starting the program

- Connect the appliance to the power supply and switch it on.
- The water supply must be opened up to the maximum pressure.
- Load your laundry and fill in the detergent, if necessary.
- Close the drum covers and the unit lid properly.
- Set the required washing conditions.
- Start the operation.

Appliance lid lock

Once a wash program has been started, the appliance lid cannot be opened.

When the wash cycle is finished, the lid lock will automatically be unlocked.

Changing the program

- To make a program change, first interrupt the washing process with the Start/Pause button.
- Set the program selector switch to the AUS(Off)-position.
- Select the desired program and start the new operation.

End of program

At the end of the wash cycle several beeps are sounded; a few minutes later, the unit goes into standby mode. The unit lid lock will be unlocked.

Switching off

- Switch off the appliance.
- Close the water supply!
- Leave the appliance lid slightly open until the next wash cycle to avoid odors.
- If the appliance is not in use for an extended period, disconnect the mains plug or switch off or turn out the fuse.

Energy saving tips

- If possible avoid the selection of high wash temperatures. Modern detergents achieve good washing results even at low temperatures.
- Select the wash program depending on the type of laundry and the required degree of washing.
- Take advantage of the maximum capacity of each wash program.
- Clean the filter regularly to avoid excessive washing and high energy consumption.
- Ventilate the room well. The room temperature should not rise above +35°C.

Cleaning and Maintenance

⚠ WARNING:

- Always switch off the appliance and disconnect it from the power supply before cleaning and user maintenance.
- Allow the appliance to cool down sufficient before cleaning. **Scalding!**
- Do not use steam cleaners for cleaning the appliance; moisture could enter electrical components. **Risk of electric shock!** Hot steam could damage the plastic parts. The appliance must be dry before restarting operation.

⚠ CAUTION:

- Do not use a wire brush or other sharp, abrasive items.
- Do not use any acidic or abrasive detergents.

ℹ NOTE:

Dirty or clogged filter degrades the washing result. Regularly check the filter and clean them if necessary.

Maintenance of the washing machine

- Clean the appliance outer surfaces and the lid sealing thoroughly with a soft, damp cloth. Use only mild cleaning agent.
- Use a dampened cloth with a little white vinegar or a special detergent for washing machines to clean the appliance drum.
- Recommendation: allow the appliance to run regularly without loading in the program [Cotton 90°C].
- Dry the outer surfaces thoroughly before taking in operation again.

Cleaning the detergent container



- Press the release button above the detergent container and remove it at the same time.

- Wash the chambers thoroughly under running water. If necessary, use a soft brush.
- Reassemble the detergent container properly.

Cleaning the inlet filter

⚠ CAUTION:

- Close the water supply before cleaning!
- Always check if the water hoses are properly reinstalled and no water leaks.

Inlet filter at the tap

Clean the filter when not sufficient water is supplied with opened water valve.



- Unscrew the inlet hose from the water valve.

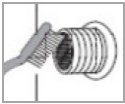
- Wash the inlet filter under running water. Reconnect the inlet hose firmly.

Inlet filter at the appliance

Clean the filter regularly, about every one to three months.



- Unscrew the inlet hose from the appliance back.



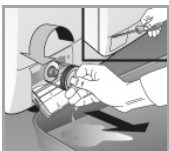
- Clean the filter with a small brush.
- Reconnect the inlet hose firmly.

Cleaning the filter of drain pump

⚠ CAUTION:

The appliance must never be used without the filter.

The foreign body trap in the drain pump prevents the flushed parts from closing off the pumping system. Clean the pump regularly, approx. once a month; depending on use.



- Open the cover in the base of the unit. **Caution!** For this, the use of a tool could be necessary.

- Place a drip tray under to catch possible leaking water.

- Turn the cap counterclockwise. Look for leaking water! **Turn the filter not completely out!**
- Interrupt the water flow by turning the filter clockwise again.
- If the draining process is completed, turn out the filter completely.
- Take off the filter and remove any dirt and foreign objects.
- Insert the cap again and make sure it is tightened well and no water can escape.
- Close the drain pump cover.

Troubleshooting

Before you contact an authorized specialist

Trouble	Possible cause / measure
Appliance does not work	• Check the power supply. • Is the appliance switched on? • Is a program selected? • Consider the maximum loading.
No water supply	• Tap is not open, water supply not free or water pressure too low. • Inlet filter blocked. • Inlet hose is blocked, kinked, squeezed.
Water is not pumped out	• Drain hose is blocked, kinked, squeezed, not correctly connected • Drain pump is blocked.
Strong vibration	• Have the transport bolts been removed? • The appliance must stand on a firm surface. • Are the feet aligned?

i NOTE:

If a problem still persists after following the steps above, contact your distributor or an authorized technician.

Technical Data

Electrical connection.....

Connection voltage:220-240 V~ / 50 Hz

Connection power:2100 W

Dimension H x W x D / Weight.....

Unit size:90.0 x 40.0 x 60.0 cm

Net weight:approx. 61.5 kg

Accessories available.....

Inlet hose safety system.....Art.-No. 8900 400

The right to make technical and design modifications in the course of continuous product development remains reserved.

This appliance has been tested according to all relevant current CE guidelines, such as electromagnetic compatibility and low voltage directives, and has been constructed in accordance with the latest safety regulations.



Disposal

Meaning of the "Dustbin" Symbol

Protect our environment; do not dispose of electrical equipment in the domestic waste.

Please return any electrical equipment that you will no longer use to the collection points provided for their disposal.

This helps avoid the potential effects of incorrect disposal on the environment and human health.

This will contribute to the recycling and other forms of reutilization of electrical and electronic equipment.

Information concerning where these can be disposed of can be obtained from your local authority.

WARNING:

Remove or disable any existing snap and bolt locks, if you take the unit out of operation or dispose it.

EU Product Data Sheet

Data sheet for household washing machines according regulation (EU) No. 1061/2010

Brand	Bomann	
Model	WA 5727 TL	
Rated capacity	kg	7.0
Energy efficiency class¹⁾	A+++	
Annual energy consumption²⁾	kWh	158
Energy consumption of standard program		
- Cotton 60°C at full load	kWh	0.72
- Cotton 60°C at partial load	kWh	0.79
- Cotton 40°C at partial load	kWh	0.57
Weighted power consumption: off mode	W	0.46
Weighted power consumption: left-on mode	W	0.46
Annual water consumption³⁾	l	10340
Spin-drying efficiency class⁴⁾	C	
Maximum spin speed	rpm	1200
Remaining moisture		
- Cotton 60°C at full load	%	51
- Cotton 60°C at partial load	%	56
- Cotton 40°C at partial load	%	56
Standard program⁵⁾	Cotton 60°C / 40°C	
Program time of standard program		
- Cotton 60°C at full load	Min.	205
- Cotton 60°C at partial load	Min.	207
- Cotton 40°C at partial load	Min.	199
Duration of the left-on mode	Min.	-
Airborne acoustical noise: washing	dB(A) re1pW	60
Airborne acoustical noise: spinning	dB(A) re1pW	78
Built-in appliance	-	

1)A+++ (höchste Effizienz) bis D (geringste Effizienz).

2)Auf der Grundlage von 220 Standard-Waschzyklen für 60°C- und 40°C-Baumwollprogramme bei vollständiger und Teil- Beladung. Der tatsächliche Energieverbrauch hängt von der Art der Nutzung des Gerätes ab, sowie dem Verbrauch der Betriebsarten mit geringer Leistungsaufnahme.

3)Auf der Grundlage von 220 Standard-Waschzyklen für 60°C- und 40°C-Baumwollprogramme bei vollständiger und Teil- Beladung. Der tatsächliche Wasserverbrauch hängt von der Art der Nutzung des Gerätes ab.

4)Auf einer Skala von G (geringste Effizienz) bis A (höchste Effizienz).

5)Baumwolle 60°C / 40°C. Bei vollständiger und Teil- Beladung sind diese Standard-Waschprogramme zur Ermittlung der Angaben auf dem Energielabel. Diese Programme sind zur Reinigung normal verschmutzter Wäsche geeignet und auf den kombinierten Energie- und Wasserverbrauch am effizientesten.

BOMANN®
C. Bomann GmbH
www.bomann-germany.de

Stand 01/18