

BOMANN®

HEAT PUMP DRYER WPT 5021



Instruction Manual

CE

Contents

Introduction	Page 3
General Notes	Page 3
Special safety Information for this Unit	Page 3
Unpacking the Appliance	Page 4
Appliance Equipment	Page 5
Installation	Page 5
Startup / Operation	Page 6
Starting a Program	Page 8
Cleaning and Maintenance	Page 9
Troubleshooting	Page 11
Technical Data	Page 11
Disposal	Page 13

Introduction

Thank you for choosing our product. We hope you will enjoy using the appliance.

Symbols in these Instructions for Use

Important information for your safety is specially marked. It is essential to comply with these instructions to avoid accidents and prevent damage:

 **WARNING:**

This warns you of dangers to your health and indicates possible injury risks.

 **CAUTION:**

This refers to possible hazards to the machine or other objects.

 **NOTE:** This highlights tips and information.

General Notes

Read the operating instructions carefully before putting the appliance into operation and keep the instructions including the warranty and the receipt. If you give this device to other people, also pass on the operating instructions.

 **NOTE:**

The illustrations can deviate from the original appliance.

- The appliance is designed exclusively for private use and for the envisaged purpose. This appliance is not fit for commercial use.
- The appliance is only to be used as described in the user manual. Do not use the appliance for any other purpose. Any other use is not intended and can result in damages or personal injuries.
- Do not use it outdoors. Keep it away from sources of heat, direct sunlight and humidity.
- Do not operate the appliance **without** supervision.
- When not in use, for cleaning, user maintenance works or with disruption, switch off the appliance and disconnect the plug (pull the plug itself, not the lead) or turn off the fuse.
- The appliance and if possible the mains lead have to be checked regularly for signs of damage. If damage is found the appliance must not be used.
- For safety reasons, alterations or modifications of the appliance are prohibited.
- In order to ensure your children's safety, please keep all packaging (plastic bags, boxes, polystyrene etc.) out of their reach.

 **WARNING:**

Do not allow small children to play with the foil. There is a **danger of suffocation!**

Special safety information for this Unit



WARNING: Hot surface! Danger of burns!

The touchable surfaces may become very hot during operation.

 **WARNING:**

Never switch the appliance off before the end of the drying cycle, unless all washing is taken out quickly and spread out so that the heat can be dissipated.

- The dry weight of laundry must not exceed the max. capacity of 8 kg.

- The ventilation openings in the appliance base (if existing) may not be clogged / blocked e.g. by carpet.
- Do not place the appliance behind a lockable door, a sliding door, or a door with a hinge that lies opposite the door hinge of the appliance in such a way that it prevents the appliance door from opening fully.
- Observe the "Drying advice" that we give you in the chapter "Startup / Operation".
- Do not use the appliance without installed filter. Clean the lint filter before or after each use.
- Make sure that no fibres, dust and other dirt collects around the appliance.
- The appliance must not be used if industrial chemicals have been used for cleaning.
- This appliance can be used by **children** aged from 8 years and above and persons with reduced physical, sensory or mental capabilities or lack of experience and knowledge if they have been given supervision or instruction concerning **use of the appliance** in a safe way and understand the hazards involved.
- **Children** under 3 years should be kept away, unless they are constantly supervised.
- **Children** shall not play with the appliance.
- Cleaning and **user maintenance** shall not be made by **children**, unless they are older than 8 years and are supervised.
- Do not try to repair the appliance on your own. Always contact an authorized technician. If the supply cord is damaged, it must be replaced by the manufacturer, its service agent or similarly qualified persons in order to avoid a hazard.

Unpacking the Appliance

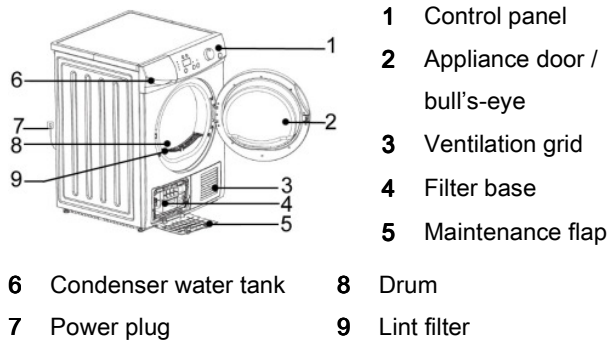
- Remove the appliance from its packaging.
- Remove all packaging material, such as foils, filler and cardboard packaging.
- To prevent hazards, check the appliance for any transport damage.
- In case of damage, do not put the appliance into operation. Contact your distributor.

i NOTE:

Production residue or dust may have collected on the appliance. We recommend cleaning the appliance according to chapter "Cleaning and Maintenance".

Appliance Equipment

Appliance Overview



Working principle

Hot process air flows through the drum and thereby the therein wet laundry.

The humidity of the laundry is absorbed by the air, and then discharged in the heat pump. There, the air is cooled using a refrigerant, which stores the extracted energy.

Energy is not (hardly) getting lost, because this is used to warm the cooled air, which is then transferred to the laundry and thus the circle is closed.

Installation

⚠ WARNING:

The appliance must not be connected to the mains during installing. Otherwise there is **danger to life or electric shock hazard!**

Appliance location

- The site should be located near a properly grounded power socket.
- Place the appliance so that all controls are easily to reach and the appliance door can open without being impeded.
- Good ventilation around the appliance is required, in order to dissipate the heat properly. Sufficient clearance must be created for this purpose.

- Make sure that the floor, on which the appliance is installed, is even, heat-resistant and clean.
- Take care of a solid and horizontal position of the appliance. If the appliance is not horizontally leveled, adjust the feet accordingly.
- **Avoid the installation:**
 - near heaters, next to a stove, direct sunlight or any other heat sources;
 - at locations with high humidity (e.g. outdoors), as metal parts would be susceptible to corrosion under such circumstances;
 - in rooms where the temperature drops below 5°C or above 35°C. Do not expose the appliance any weather.
 - near volatile or flammable materials (e.g. gas, fuel, alcohol, paint, etc.).

Adjusting the feet

⚠ CAUTION:

The feet must never be removed. Do not restrict the floor clearance through carpets, strips of wood or similar. **Danger of heat accumulation!**

- Loosen the locknuts with a wrench.
- Turn the feet to the right to let down the appliance; turn to the left to lift it up.
- Tighten the lock nuts with the wrench when the appliance is properly leveled. The feet must have solid ground contact.
- Check with a spirit level if the appliance is leveled horizontally. If the appliance is not in balance, the feet must be adjusted again.

Electrical connection

⚠ WARNING:

- The installation to the mains supply must conform to the local standards and regulations.
- Improper connection may cause to an **electric shock!**
- Do not use multiple sockets.

⚠ WARNING:

- It is not allowed to modify the plug provided with the appliance. If the plug does not fit properly to the outlet, let install a proper outlet by an authorized specialist.
- The accessibility of the power plug must always be ensured in order to disconnect the appliance from the power supply in case of an emergency.
- Ensure that your mains power corresponds with the specifications of the appliance. The specifications are printed on the rating label.
- Connect the mains cable to a properly installed and earthed wall outlet.
- When using extension cords, they should have a wire cross section of 1.5 mm².
- If the plug after installation is not accessible, a corresponding disconnect device must be available to meet the relevant safety regulations.

Startup / Operation

Prior using for the first time

⚠ CAUTION:

After transporting the appliance should be left standing for about 2 hours, so that the coolant can collect in the compressor.

- Remove the accessories and other materials from the appliance drum.
- Clean the appliance drum. Follow the instructions which we provide in the chapter “Cleaning and Maintenance”.
- Allow the appliance to dry the first time for about 30 minutes with old, damp clothes (see “Starting the program”).

Drying advice

⚠ CAUTION: Do NOT dry in the appliance!

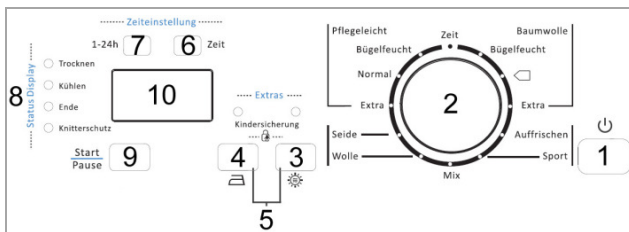
- Fabrics which are not tumble-dryer safe. Always follow the instructions on the care labels of your fabrics.
- Washing that has not been washed.
- Washing stained with cooking oil, acetone, alcohol, fuel, petrol, kerosene, stain remover, turpentine, wax, or wax remover. This must be washed first in the washing machine with hot water and detergent before drying.
- Objects such as foam rubber (latex), shower caps, waterproof fabrics, rubberised items, and items of clothing or pillows with foam rubber flakes.
- Softeners or similar products should be used as specified in the softener instructions.
- The last section of the drying cycle is done without heat (cool down cycle) to ensure that the items of washing remain at a temperature which does not lead to the washing being damaged.

- Remove all objects from pockets, such as matches and lighters.
- Close zips, buttons, or hooks before drying. Tie loose straps or loops together.

Adding laundry

- Shake out the washed fabrics and sort them according to the required drying setting, fibre, and fabric type, size, as well as remaining moisture after spinning. This will make the drying very consistent.
- Each load should correspond to the rated capacity of the appliance.
- Ensure that no items of washing are trapped in the door.

Control panel



- 1 Power:** button to switch on and off the power supply.
- 2 Program selection:** about the program selector switch you select a dry program. Consider the program details in the “Program table”.

Extras: press the corresponding button to activate or deactivate the option. The respective control lamp indicates the activation.

- 3 Signal:** the option is activated, a signal sounds:
 - when pressing any button and when using the program selector switch,
 - during an interruption of the program,
 - at the end of the program.

- 4 Anti-crease:** extended the automatic anti-crease phase (30 minutes) at the end of the drying cycle to about 120 minutes; prevents wrinkling. Note that the option depends on the program.

5 Child-proof lock:

NOTE:

To protect against accidental operation, the appliance is equipped with a locking function.

When activated, all controls are locked for operation, except the power button.

Press the button combination for a few seconds to activate or deactivate the child-proof lock. The display shows the activation.

- 6 Time selection:** about this button you select the duration of the time program (ZEIT) between 10 and 120 minutes (in steps of 10 minutes).

- 7 Start delay:** the program start can be delayed hourly by 1 – 24 hours. The appliance will start automatically with the previously set operating conditions, after the selected lead time has elapsed.

- 8 Status indicators:** the control lamps indicate the program status.

- 9 Start/Pause:** Button to start/pause the selected or running program.

10 LED-Display:

- About the display the duration of the time program and the start delay will be selected.
- After program starts the remaining dry time [REMAIN] is displayed as [x:xx] hours and minutes.
- The activated start delay [DELAY] is displayed; the program starts after [xx] hours.
- Explanation of symbols:
 - Child-proof lock is activated
 - Condenser water tank must be emptied
 - Cleaning the lint filter is required
- Possibly error messages are displayed in case of fault.

Starting a Program

Program table

i NOTE:

The figures listed below are approximate figures and recommendations under normal operating conditions and are therefore for information only. The program running times and the consumption data may deviate from the specified figures according to load, remaining moisture, and temperature.

Program	Drying setting	Program selection information	Loading (dry-weight)	Residual moisture	Time (min)	Energy (kWh)
Baumwolle (Cotton)	Bügelweich (Iron dry)	For drying normal wet cotton textiles, e.g. sheets, linen, underwear etc.	8 kg	20 %	130	1.5
	Standard*				178	1.9
	Extra				190	2.1
Pflegerleicht (Easy care)	Bügelweich (Iron dry)	For drying small loads of hardwearing fabrics; e.g. synthetic fabrics.	3.5 kg	20 %	40	0.5
	Normal				60	0.6
	Extra				130	0.77
Auffrischen (Freshen up)	-----	To refresh, ventilate or remove lint or creases from dry washing.	1 kg	-----	20	0.15
Sport (Leisure)	-----	For drying of sports / casual wear such as jeans, sweatshirts with different material thicknesses.	8 kg	20 %	200	2.2
Mix	-----	For simultaneous drying not colored synthetic / cotton fabrics.	3.5 kg	20 %	150	1.2
Wolle (Wool)	-----	To freshen up woolen fabrics. An immediate removal by the end of the program is recommended.	1 kg	-----	8	-----
Seide (Silk)	-----	For drying of silk and lingerie using warm air and gentle motion.	1 kg	-----	45	0.35
Zeit (Time)	-----	For drying textiles with a user-defined time, e.g. for after-drying of multi-layer fabrics.	-----	-----	10-120	-----

* Standard drying program: Cotton standard

In the case of a full load or partial load, this drying program is used to determine the figures on the energy label. The program is suitable for drying normal wet cotton fabrics and is the most efficient program with regard to energy consumption for cotton.

Automatic drying programs

The appliance detects the moisture in the load and automatically adjusts the optimum drying time. The electronic control ensures the best drying results even at less loading of the dryer. It is activated in all programs, except in the program with time control.

Capacity

Do not overload the appliance, otherwise the fabrics will become stretched and drying will be impaired. Refer to the information in the "Program table".

Drum light

As soon as you open the appliance door, the inside of the drum is lighted up to ensure that no washing is left behind when removed. The lamp is switched on for approx. one minute.

Starting a program

i NOTE:

Humming noises at the start of a drying operation, which are generated by the compressor start-up, are normal.

- Connect the appliance to the power supply.
- Put the washing into the drum.
- Switch on the appliance via the power button.
- Select the required operating conditions.
- Press the start/pause button to start the operation.

Program change

A change is not possible after a successful startup. To select a new program, you must switch the appliance off and on again.

End of program

After completion of the drying process the display shows [0:00] and the corresponding control lamp is lighting. If the signal function is activated, you will hear a series of beeps. The control panel switches to

standby mode and starts an automatic anti-crease cycle.

Automatic anti-crease cycle

If you do not remove the clothes from the appliance after the drying process has finished, the appliance will start the automatic anti-crease cycle of approx. 30 minutes. The appliance continues rotating the drum in intervals in order to prevent textiles from creasing. At the end of that cycle the appliance will stop operating completely.

Switch off

- Switch the appliance off by pressing the power button.
- Clean the lint filter and empty the condenser water tank as described under "Cleaning and Maintenance".
- If the appliance is not in use for an extended time:
 - disconnect it from the power supply.
 - leave the appliance door slightly open until the next dry cycle to avoid odors.

Cleaning and Maintenance

⚠ WARNING:

- Always switch off the appliance and disconnect it from the power supply before cleaning and user maintenance.
 - Allow the appliance to cool down sufficient before cleaning.
 - Do not use steam cleaners for cleaning the appliance; moisture could enter electrical components.
- Risk of electric shock!** Hot steam could damage the plastic parts. The appliance must be dry before restarting operation.

⚠ CAUTION:

- Do not use a wire brush or other sharp, abrasive items.
- Do not use any acidic or abrasive detergents.

Maintenance of the appliance

- Clean the appliance outer surfaces and the door sealing thoroughly with a soft, damp cloth. Use only mild cleaning agent.
- Check the drum regularly on dirt or fiber residues; clean the drum and the inside of the door also with a soft, damp cloth.
- Dry the appliances thoroughly before taking in operation again.

Cleaning the filter system

⚠ CAUTION:

- Dirty filter affect the drying result. Check and clean the filter regularly.
- The appliance must never be operated without installed filter.
- Improper insertion of filter may affect the performance and damage the appliance.

Lint filter

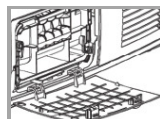
The lint filter catches all fibres which accumulate during drying. Clean the filter before or after each drying cycle.

- Remove the filter upwards.
- Open on the lint filter.
- Wipe off the lint by hand, if necessary use a damp cloth or clean the filter under running water.
- Dry the filter thoroughly and replace if correctly.

Filter base

The cleaning interval depends on the type and amount of clothes, but you should clean the filter base after every third drying cycle

- Loosen and open the maintenance flap.
- Open the two opposing locks.
- Ziehen Sie die Filterbasis nach vorne heraus.
- Pull the filter base out to the front.
- Wipe off the lint by hand, if necessary use a damp cloth or clean the filter grid under running water.



- Dry the base thoroughly and replace if correctly.

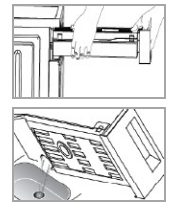
Cleaning the ventilation grid

Clean the grid approx. every two months with a damp cloth. If necessary, use a soft brush. Dry thoroughly.

Emptying the condenser water tank

Empty the condenser water tank after each drying cycle.

If the tank overflows while a program is running, the drying process stops and corresponding indicator will appear on the display.



After you have emptied the condenser water tank, press the start/pause button to continue the drying cycle.

Energy saving tips



- Take advantage of the maximum capacity of each dry program.
- Select the dry program depending on the type of laundry and the required degree of dryness.
- Dry the laundry not excessively. This protects your laundry, prevents wrinkling and save energy.
- Clean the filter regularly to avoid excessive drying and high energy consumption.
- Ventilate the room well. The room temperature should not rise above 35°C.

Troubleshooting

Before you contact an authorized specialist

Problem	Cause / Action
Appliance does not work.	<ul style="list-style-type: none"> - Check the power supply. - Is the appliance switched on? - Is a program selected? - Consider the maximum loading.
The housing is hot or there is a smell of burning.	<ul style="list-style-type: none"> - The lint filter is blocked and must be cleaned. - The filter base must be cleaned. - Ventilation openings are blocked.
Unusual odours and powerful vibrations.	<ul style="list-style-type: none"> - The appliance must stand on a solid base. - Are the screw-in feet aligned?
Fabrics are misshapen.	Always follow the instructions on the care label of your fabrics.

Error messages

Display-indication	Cause / Action
	Lint filter is clogged – must be cleaned.
	Condenser water tank is full – must be emptied.
E32	Problem with moisture sensor – call a specialist.
E33	Problem with temperature sensor – call a specialist.

i NOTE:

If a problem still persists after following the steps above, contact your distributor or an authorized technician.

Technical Data

Electrical connection / water supply.....

Mains voltage:220-240 V~

Mains frequency:50 Hz

Power consumption:650 W

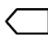
Dimension H x W x D / Weight.....

Appliance size:84.5 x 59.5 x 62.2 cm

Net weight:approx. 52.0 kg

The right to make technical and design modifications in the course of continuous product development remains reserved.

Data sheet for household drying machines according regulation (EU) No. 392/2012

Brand	BOMANN	
Model	WPT 5021	
Rated capacity	kg	8
Dryer type	Air vented / Condenser	- / •
Energy efficiency class ¹⁾	A++	
Annual energy consumption ²⁾	kWh	236
Automatic tumble dryer	yes	
Energieverbrauch des Standard-Baumwollprogramms		
- with full load	kWh	1.98
- with partial load	kWh	1.08
Weighted power consumption: off mode	W	0.01
Weighted power consumption: left-on mode	W	0.6
Duration of the left-on mode	Min	10
Standard program ³⁾		Cotton standard
Program time of standard cotton program		
- weighted at full and partial load	Min	149
- average at full load	Min	195
- average at partial load	Min	115
Condensation efficiency class ⁴⁾	B	
Condensation efficiency class of standard cotton program		
- average at full load	%	80.1
- average as partial load	%	80.1
- weighted at full and partial load	%	80.1
Noise level	dB(A) re1pW	69
Built-in appliance	-	

1) A+++ (highest efficiency) to D (lowest efficiency).

2) Weighted annual energy consumption based on 160 drying cycles for the standard program with a full load and partial load, as well as the consumption of operating modes with lower power consumption. The energy consumption per cycle depends on the type of use of the appliance.

3) The "Cotton standard" program with a full load and a partial load is the standard drying program on which the information on the label and in the datasheet is based. This program is suitable for drying normal wet cotton fabrics and is the most efficient with regard to the energy consumption for cotton.

4) A (highest efficiency) to G (lowest efficiency).

This appliance has been tested according to all relevant current CE guidelines, such as electromagnetic compatibility and low voltage directives, and has been constructed in accordance with the latest safety regulations.



Disposal

Meaning of the “Dustbin” Symbol

Protect our environment; do not dispose of electrical equipment in the domestic waste.

Please return any electrical equipment that you will no longer use to the collection points provided for their disposal.

This helps avoid the potential effects of incorrect disposal on the environment and human health.

This will contribute to the recycling and other forms of reutilization of electrical and electronic equipment.

Information concerning where these can be disposed of can be obtained from your local authority.

WARNING:

Remove or disable any existing snap and bolt locks, if you take the unit out of operation or dispose it.

BOMANN®

C. Bomann GmbH

www.bomann.de

Made in P.R.C.

Stand 12/16